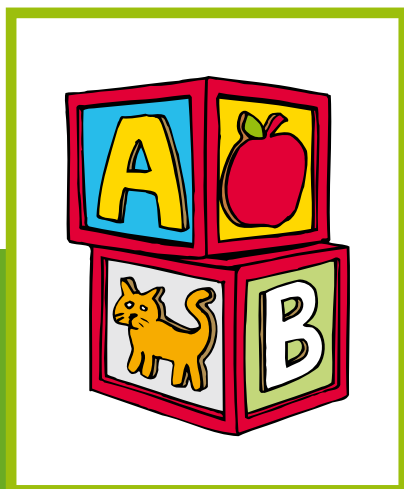




VANTAAN KAUPUNKI
CITY OF VANTAA

Family work by welfare clinics



HEALTH AND SOCIAL WELFARE DEPARTMENT
Preventive Health Care Services

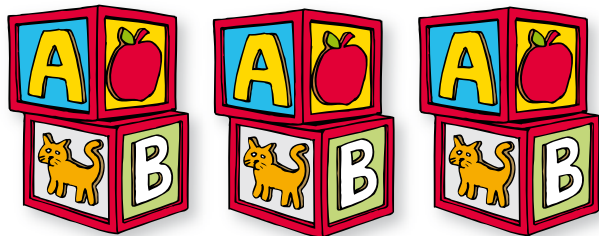
All families may enter a stage when one's own resources do not seem to be enough for coping with every-day life.

Welfare clinic's family work offers support in issues related to parenting, upbringing, partnership, and every-day routines.

Solutions and operating models are sought by means of discussing and listening.

Welfare Clinic's family work:

- based on the family's needs
- fortifies the family's own competencies and resources
- aims to be a short-term, fastneeds-based solution to the family's problems
- preventive
- confidential
- free-of-charge



*You can contact a family support worker
through the welfare clinic's nurse or by phone.*

